

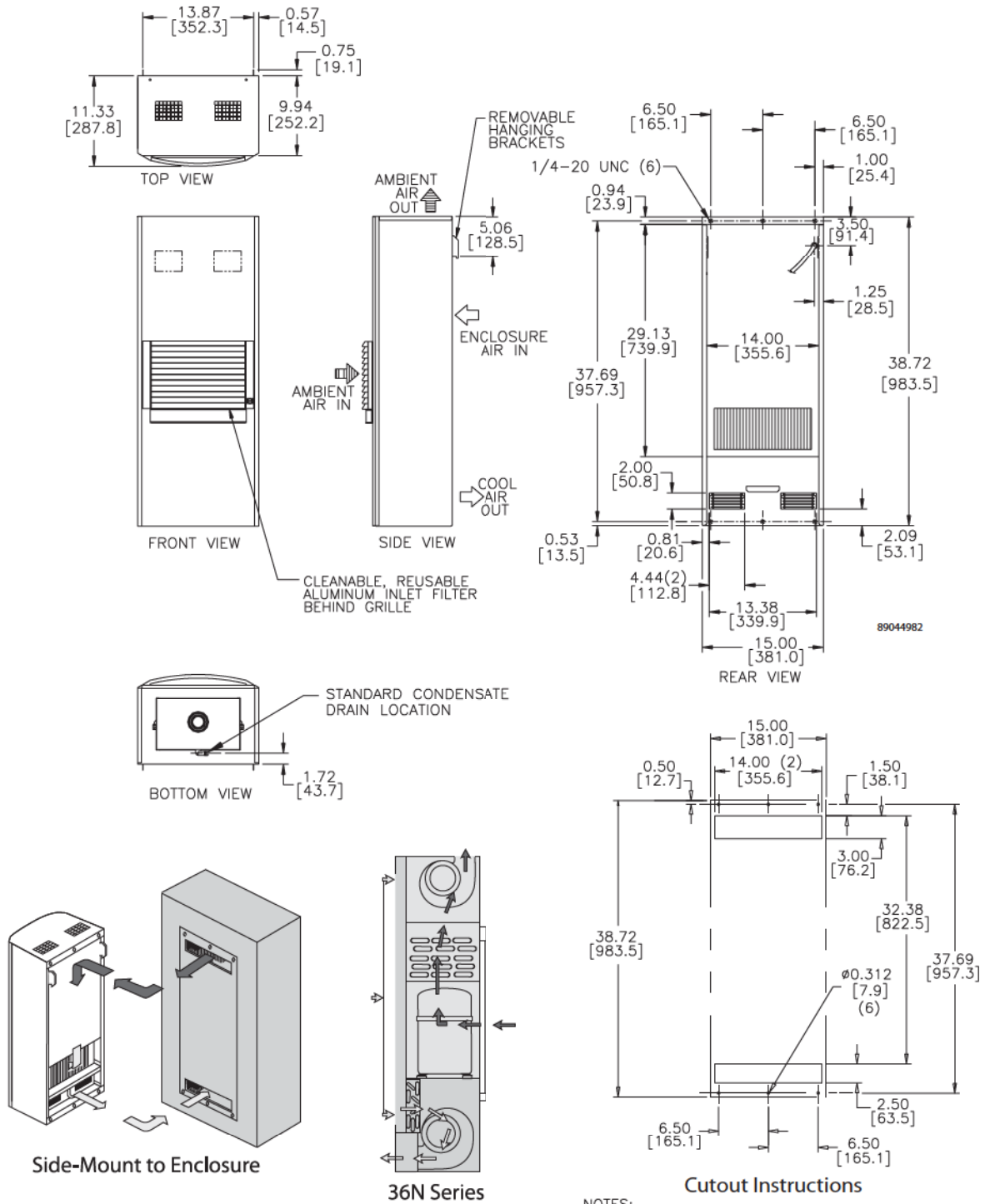
GENESIS®

 Performance Data **M36 Models 6000 BTU/Hr. (1760 W)**

CATALOG NUMBER	M360616G307	M360626G306	M360646G400
COOLING PERFORMANCE			
Nominal:			
BTUs/Hr.	5000/6000	5000/6000	5000/6000
Watts	1465/1760	1465/1760	1465/1760
Refrigerant	R-407C	R-407C	R-407C
Refrigerant Charge (ounces/grams)	18/510	18/510	18/510
Operating Temperature Range:			
Maximum (°F/°C)	125/52	125/52	125/52
Minimum (°F/°C)	50/10	50/10	50/10
Airflow at 0 Static Pressure:			
Internal loop 50 Hz (CFM / m ³ /hr.)	230/391	230/391	230/391
External loop 50 Hz (CFM / m ³ /hr.)	218/370	218/370	218/370
Internal loop 60 Hz (CFM / m ³ /hr.)	260/442	260/442	260/442
External loop 60 Hz (CFM / m ³ /hr.)	245/416	245/416	245/416
ELECTRICAL DATA			
Rated Voltage	115	230	460V 1PH
Frequency (Hz)	50/60	50/60	50/60
Operating Range	+/- 10%	+/- 10%	+/- 10%
Max. Power Consumption (W at 50/60 Hz)	1150	1150	1288
Max. Nominal Current (A at 50/60 Hz)	10	5	2.8
Starting Current (A)	36.2	17.7	9
Agency Approvals		cUL Listed CE	cUR Recognized CE
	Others available upon request		
Power Input Description	6-ft. cord with NEMA 5-20 plug	6-ft. cord with NEMA 6-15 plug	6-ft. cord with wire leads
ENCLOSURE PROTECTION			
UL Type	Type 12 standard		
CONTROLLER			
Description	Basic mechanical thermostat		
Thermostat Location	Behind filter		
Factory Thermostat Setting (°F/°C)	80/27		
SOUND LEVEL			
At 1.5 Meters	60 dB(A)		
UNIT CONSTRUCTION			
Material	Mild steel sheet metal standard Stainless steel optional		
Finish	RAL 7042 gray, semi-gloss powder-coat paint standard		
UNIT DIMENSIONS			
Height (in./mm)	38.72/984	38.72/984	38.72/984
Width (in./mm)	15/381	15/381	15/381
Depth (in./mm)	11.33/288	11.33/288	11.33/288
Weight (lb./kg)	120/54	120/54	140/64

GENESIS®

M36 Models 6000 BTU/Hr. (1760 Watt)



- NOTES:
1. SERVICE CORD IS ROUTED THROUGH 3.00 X 14.00 RETURN AIR OPENING.
 2. DASHED LINES REPRESENT AIR CONDITIONER.
 3. CUT-OUT DIMENSIONS FOR STANDARD UNITS ONLY.

Visit www.McLeanCoolingTech.com to download 2D and 3D CAD drawings into the overall design of your electronic system.