

## DACS OUTDOOR



### INDUSTRY STANDARDS

UL Recognized

CE  
Telcordia GR-487 capable

### APPLICATION

- Outdoor telecommunications equipment
- Industrial automation
- Outdoor kiosk
- Outdoor displays
- OSP applications

### FEATURES

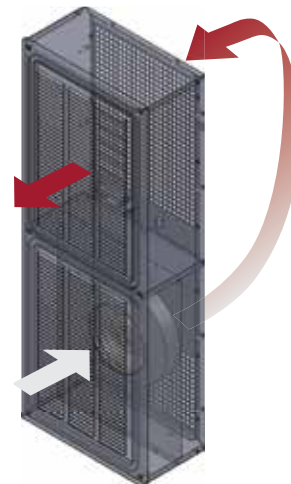
- Customizable solutions to meet any customer need
- Two models utilizing Hydrophobic GORE® filter
- Two models with MERV 12, pleated filter
- Standard power input: 48 VDC
- UL Listed to save time and money with agency approvals
- Power Cord included
- Easy to replace filters
- Broad operating temperature range -40 C to 55 C
- Every unit functionally tested before shipping
- Hydrophobic GORE® filter protects against salt and other corrosive agents
- Controller provides soft start and current limiting at start up
- Vibration resistant to withstand over-the-ground transportation of the telecom system
- Variable speed blowers standard on units for quiet running
- Controller provides fan speed control and temperature alarm

### FINISH

- Standard Finish: Galvanized steel with RAL 7035 light-gray semi-textured powder coat paint

### OPTIONS

- Custom Material: Aluminum, Stainless Steel, Mild Steel
- Custom Finish: Paint Color
- Custom Power Input: 24 VDC, 115 VAC, & 230 VAC
- Custom Sizes: Height 29 in. (737 mm) to 56 in. (1422 mm)



### NOTES

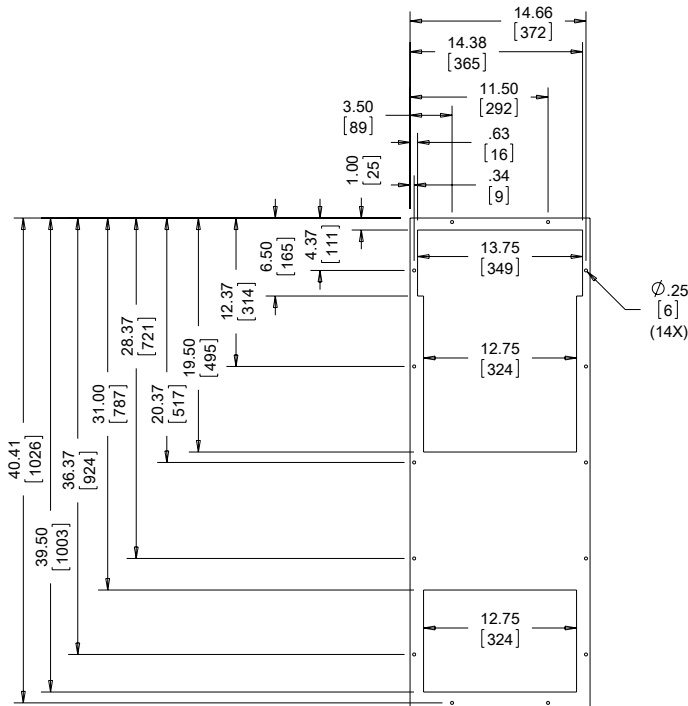
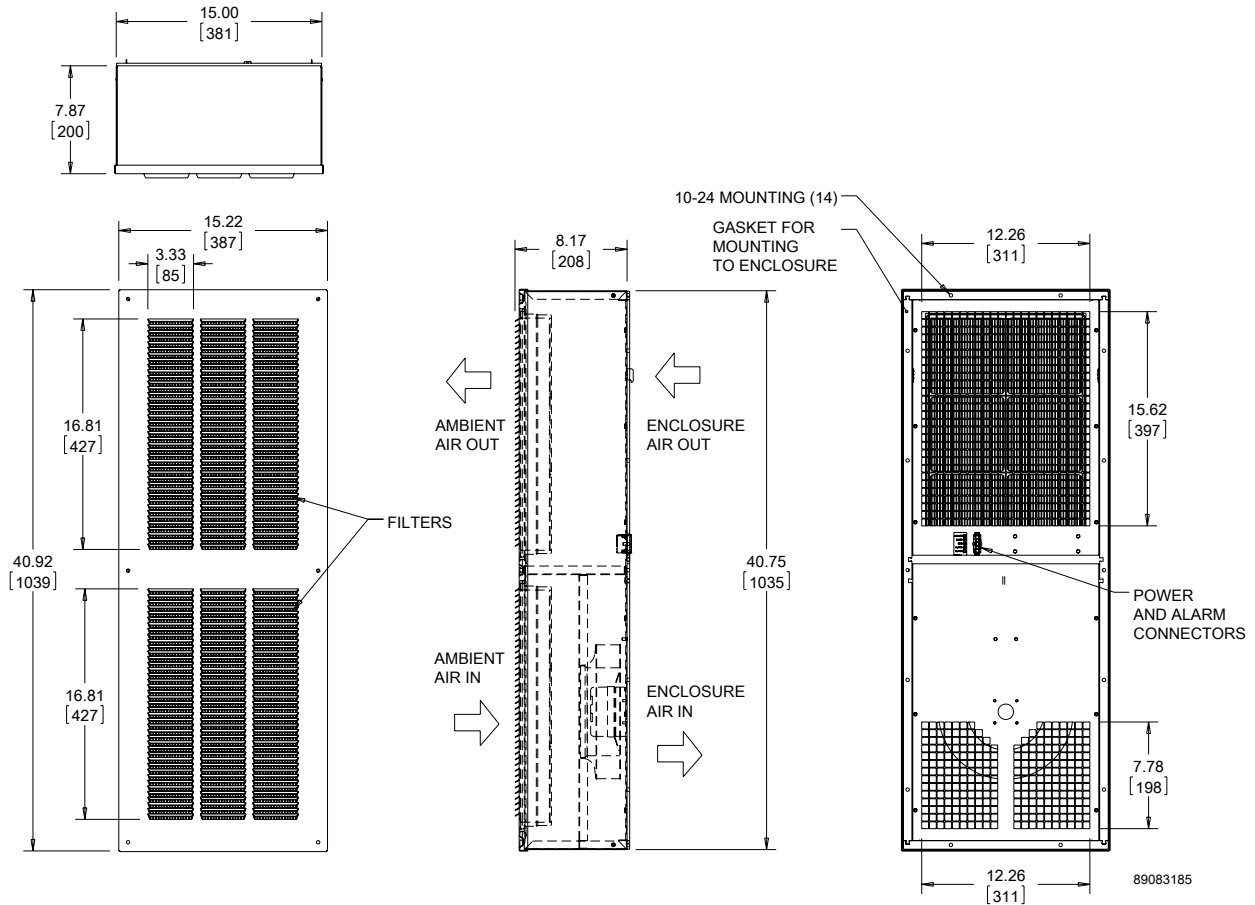
Visit [www.PentairProtect.com](http://www.PentairProtect.com) to download 2D and 3D CAD drawings into the overall design of your electrical system.

*GORE® is a registered trademark of W.L. Gore & Associates, Inc.*

Performance Data **DACS**

<b>CATALOG NUMBERS</b>				
	DCG4108548100	DCG2904248100	DCT5615048100	DCT3809448100
<b>COOLING PERFORMANCE</b>				
<b>Nominal:</b>				
Watts/°F	85	42	50	94
Watts/°C	152	75	270	170
Operating Temperature Range:				
Maximum (°F/°C)	131/55	131/55	131/55	131/55
Minimum (°F/°C)	-40/-40	-40/-40	-40/-40	-40/-40
Air Flow at 0 Static Pressure: (CFM/ m <sup>3</sup> /hr.)	265/450	130/221	470/799	300/510
<b>ELECTRICAL DATA</b>				
Rated Voltage (VDC)	48			
Operating Range (VDC)	40-60			
Max. Power Consumption (Watts)	159	159	192	173
Max. Nominal Current (Amps)	3.3	3.3	4.0	3.6
Agency Approvals	UL Recognized, CE			
<b>ENCLOSURE PROTECTION</b>				
UL Type	Type 3R			
<b>CONTROLLER</b>				
Description	Fan speed control and temperature alarm			
Factory Thermostat Setting (°F/°C)	104/40			
<b>SOUND LEVEL</b>				
At 1.5 Meters - Full Speed (dBA)	67.1	68.1	65.0	63.4
<b>UNIT CONSTRUCTION</b>				
Material	Galvanized Steel			
Finish	RAL 7035 light-gray, semi-textured powder-coat paint standard			
Filter Type	Hydrophobic GORE®		Pleated Filter Merv 12	
<b>UNIT DIMENSIONS</b>				
Height (in./mm)	40.75/1035	28.75/730	56/1422	38/965
Width (in./mm)	15/381	12/305	20/508	16/406
Depth (in./mm)	7.88/200	7.12/181	7/178	6/152
Weight (lb./kg)	50/22.7	40/18.1	65/29.5	38/17.2

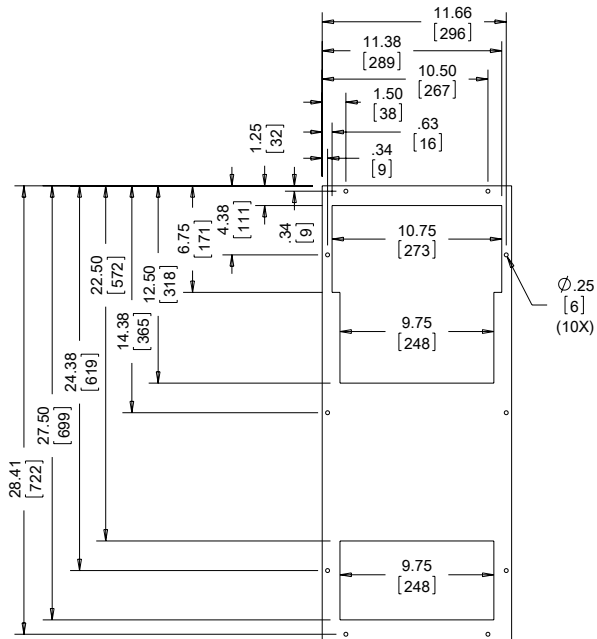
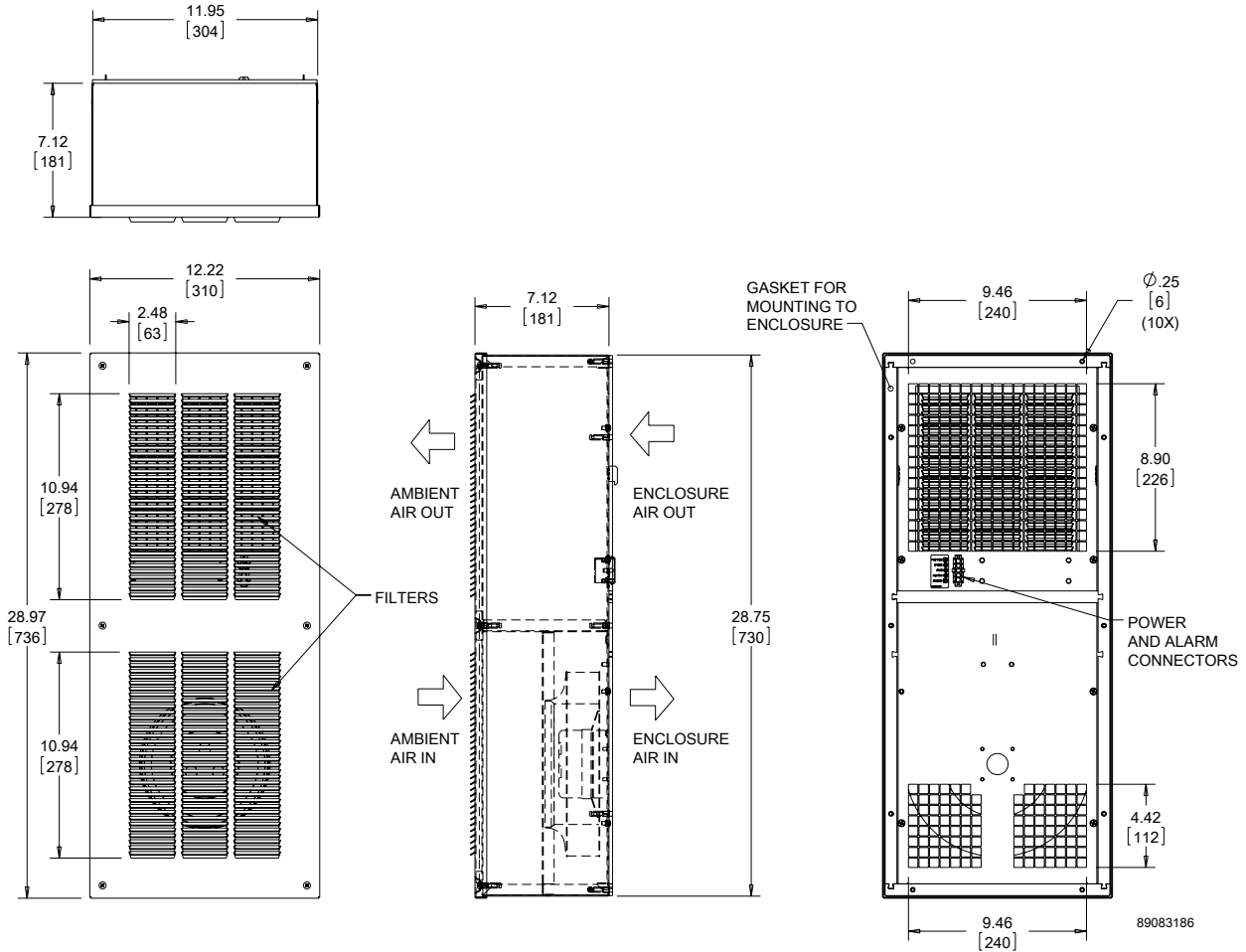
DCG4108548100



**CUTOUT DIMENSIONS**

Visit [www.PentairProtect.com](http://www.PentairProtect.com) to download 2D and 3D CAD drawings into the overall design of your electrical system.

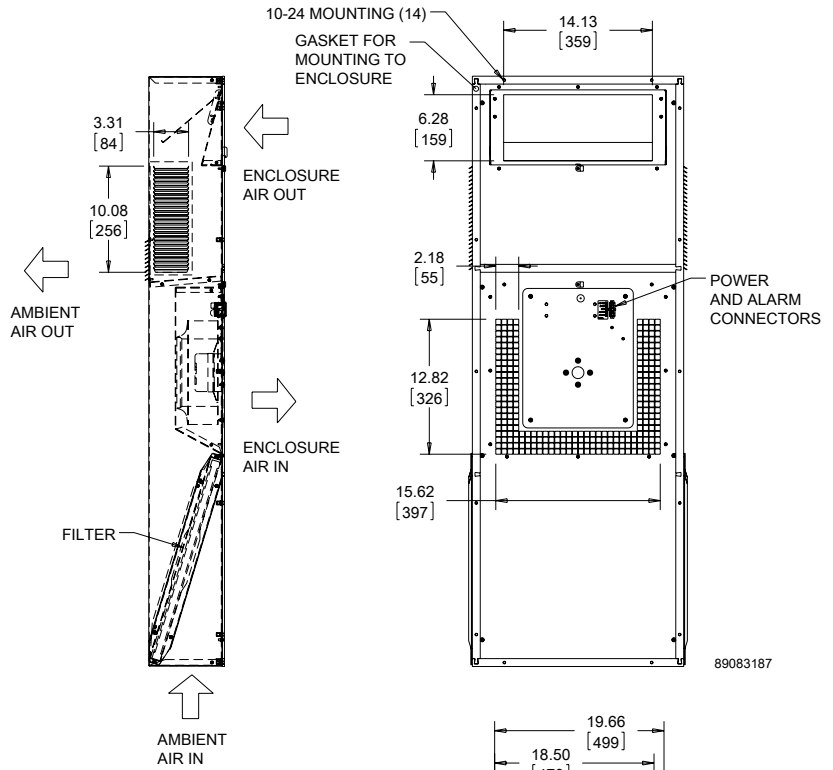
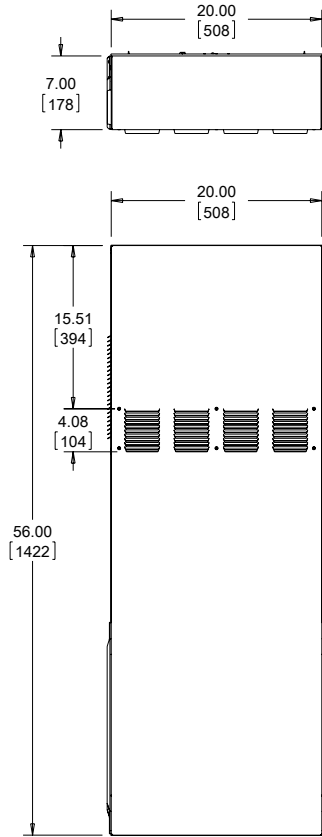
DCG2904248100



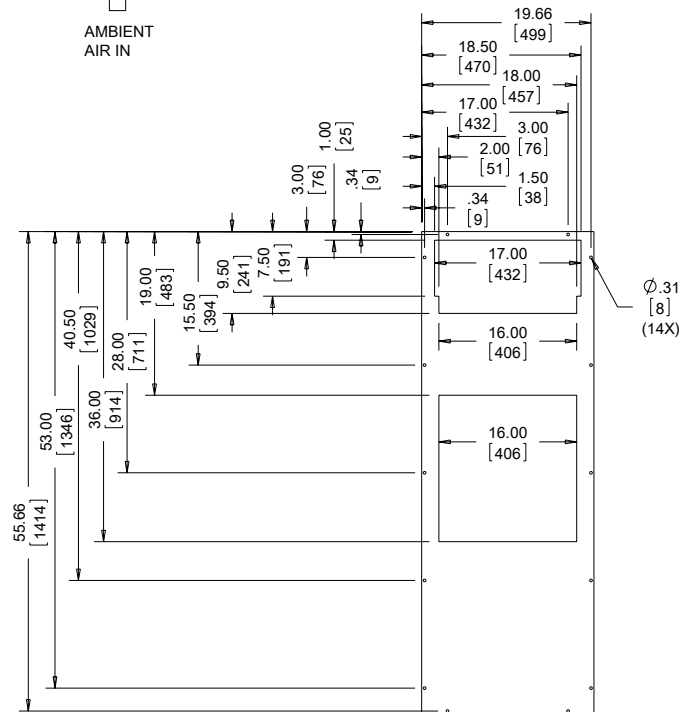
CUTOUT DIMENSIONS

Visit [www.PentairProtect.com](http://www.PentairProtect.com) to download 2D and 3D CAD drawings into the overall design of your electrical system.

DCT5615048100



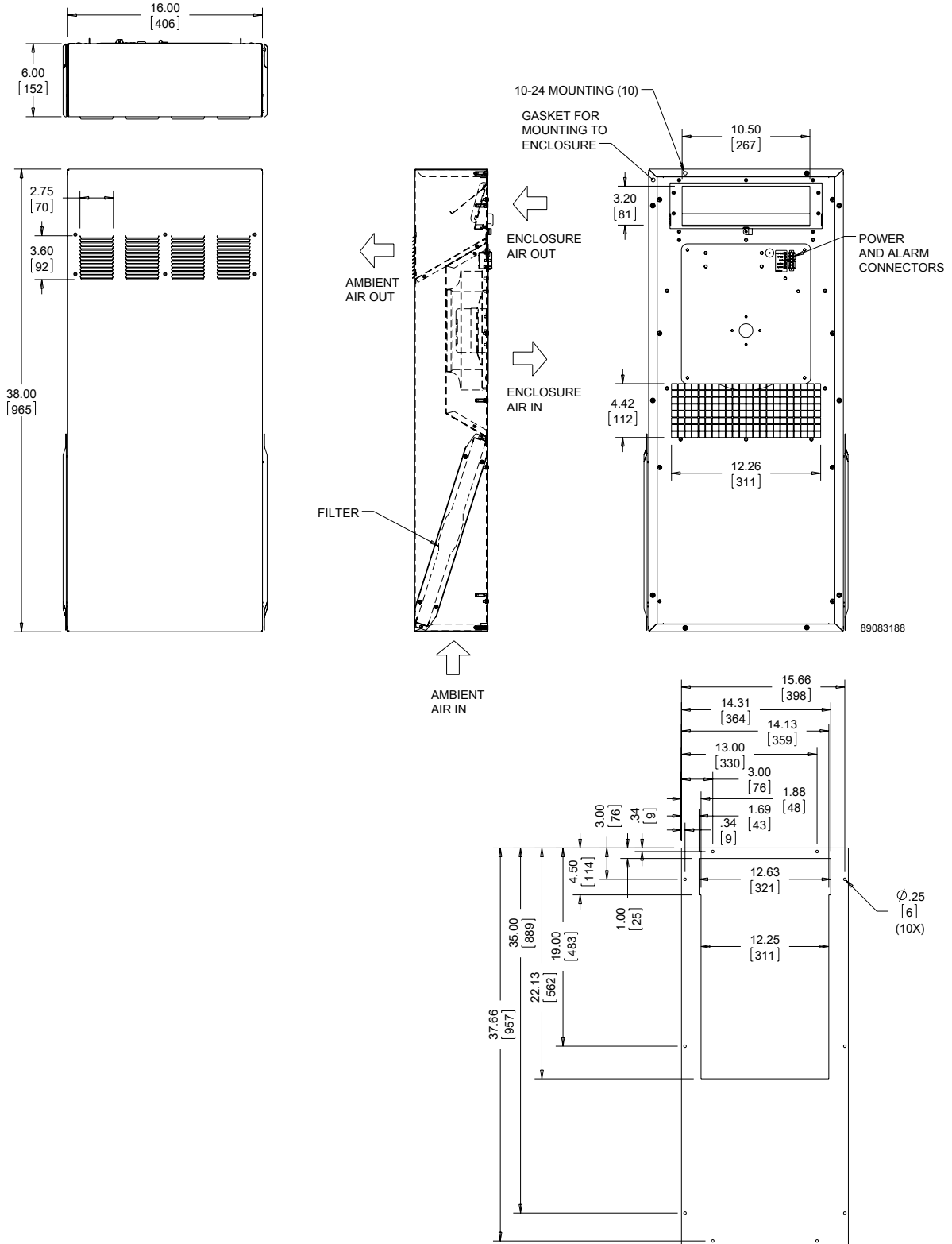
89083187



CUTOUT DIMENSIONS

Visit [www.PentairProtect.com](http://www.PentairProtect.com) to download 2D and 3D CAD drawings into the overall design of your electrical system.

DCT3809448100



89083188

CUTOUT DIMENSIONS

Visit [www.PentairProtect.com](http://www.PentairProtect.com) to download 2D and 3D CAD drawings into the overall design of your electrical system.