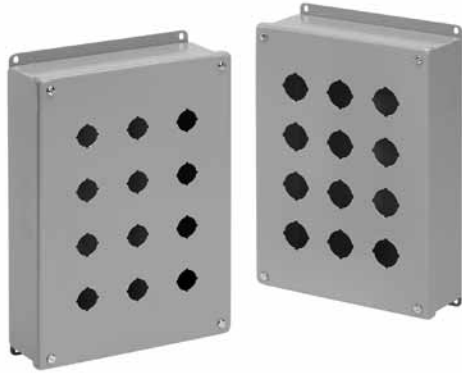


**30.5-MM AND 22.5-MM PUSHBUTTON ENCLOSURES, TYPE 12**

**APPLICATION**

These pushbutton enclosures are designed to hold 30.5-mm or 22.5-mm pushbuttons and switches.

**SPECIFICATIONS**

- 16 or 14 gauge steel
- Seams continuously welded and ground smooth
- Captivated cover screws thread into sealed wells
- Grounding nut in body of enclosure
- Bonding provision on cover
- Oil-resistant gasket
- Factory stamped 4-way pushbutton holes
- Enclosures with more than one column of pushbutton holes have internal detachable hinge
- External wall-mounting brackets

**FINISH**

ANSI 61 gray polyester powder paint inside and out

**ACCESSORIES**

See also *Accessories*.  
 Industrial Corrosion Inhibitors  
 HOL-SEALERS™ Hole Seals  
 Tamper-Resistant Screws

**BULLETIN: PB1**
**INDUSTRY STANDARDS**

UL 508A Listed; Type 12, 13; File No. E61997  
 cUL Listed per CSA C22.2 No. 94; Type 12, 13; File No. E61997

NEMA/EEMAC Type 12, 13  
 CSA File Number 42186: Type 12  
 IEC 60529, IP65

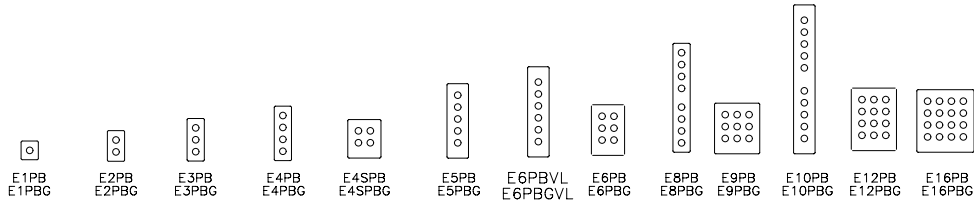
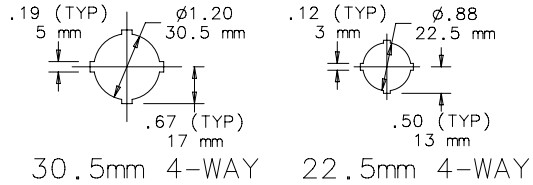
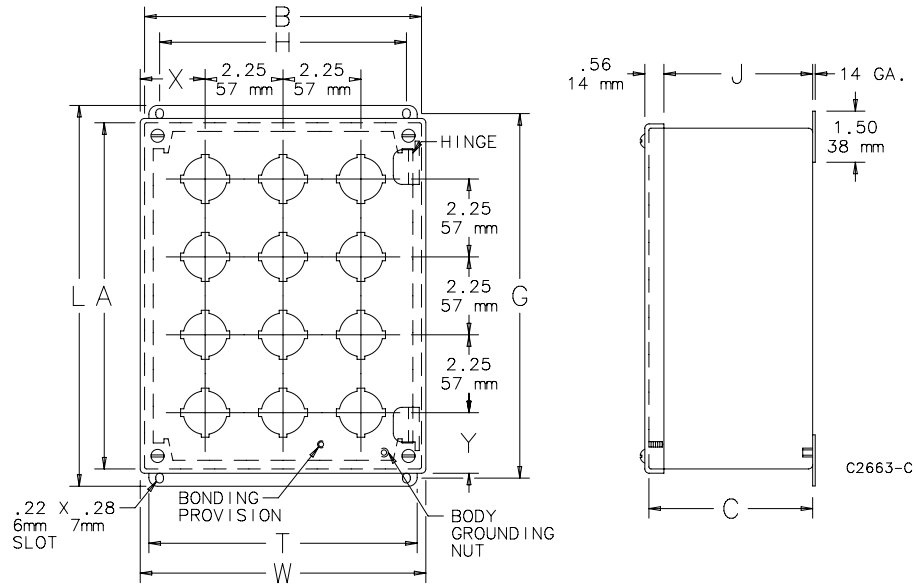
## Standard Product

Catalog Number	AxBxC in.	AxBxC mm	Hole Size	Number of Holes	Gauge	Mounting G x H (in.)	Mounting G x H (mm)	Overall L x W (in.)	Overall L x W (mm)	J (in.)	J (mm)	T (in.)	T (mm)	X (in.)	X (mm)	Y (in.)	Y (mm)
E1PB	3.50 x 3.25 x 2.75	89 x 83 x 70	30.5 mm	1	16	4.00 x 2.38	102 x 60	4.50 x 3.47	114 x 88	2.31	59	3.00	76	1.73	44	1.86	47
E1PBG	3.50 x 3.25 x 2.75	89 x 83 x 70	22.5 mm	1	16	4.00 x 2.38	102 x 60	4.50 x 3.47	114 x 88	2.31	59	3.00	76	1.73	44	1.86	47
E2PB	5.75 x 3.25 x 2.75	146 x 83 x 70	30.5 mm	2	16	6.25 x 2.38	159 x 60	6.75 x 3.47	171 x 88	2.31	59	3.00	76	1.73	44	1.86	47
E2PBG	5.75 x 3.25 x 2.75	146 x 83 x 70	22.5 mm	2	16	6.25 x 2.38	159 x 60	6.75 x 3.47	171 x 88	2.31	59	3.00	76	1.73	44	1.86	47
E3PB	8.00 x 3.25 x 2.75	203 x 83 x 70	30.5 mm	3	14	8.50 x 2.38	216 x 60	9.00 x 3.47	229 x 88	2.31	59	3.00	76	1.73	44	1.86	47
E3PBG	8.00 x 3.25 x 2.75	203 x 83 x 70	22.5 mm	3	14	8.50 x 2.38	216 x 60	9.00 x 3.47	229 x 88	2.31	59	3.00	76	1.73	44	1.86	47
E4PB	10.25 x 3.25 x 2.75	260 x 83 x 70	30.5 mm	4	14	10.75 x 2.38	273 x 60	11.25 x 3.47	286 x 88	2.31	59	3.00	76	1.73	44	1.86	47
E4PBG	10.25 x 3.25 x 2.75	260 x 83 x 70	22.5 mm	4	14	10.75 x 2.38	273 x 60	11.25 x 3.47	286 x 88	2.31	59	3.00	76	1.73	44	1.86	47
E4SPB	7.25 x 6.25 x 3.00	184 x 159 x 76	30.5 mm	4	14	7.75 x 5.38	197 x 137	8.25 x 6.47	210 x 164	2.56	65	6.00	152	2.11	54	2.61	66
E4SPBG	7.25 x 6.25 x 3.00	184 x 159 x 76	22.5 mm	4	14	7.75 x 5.38	197 x 137	8.25 x 6.47	210 x 164	2.56	65	6.00	152	2.11	54	2.61	66
E5PB	12.50 x 3.25 x 2.75	317 x 83 x 70	30.5 mm	5	14	13.00 x 2.38	330 x 60	13.50 x 3.47	343 x 88	2.31	59	3.00	76	1.73	44	1.86	47
E5PBG	12.50 x 3.25 x 2.75	317 x 83 x 70	22.5 mm	5	14	13.00 x 2.38	330 x 60	13.50 x 3.47	343 x 88	2.31	59	3.00	76	1.73	44	1.86	47
E6PBVL	14.75 x 3.25 x 2.75	375 x 83 x 70	30.5 mm	6	14	15.25 x 2.38	387 x 60	15.75 x 3.47	400 x 88	2.31	59	3.00	76	1.73	44	1.86	47
E6PBGVL	14.75 x 3.25 x 2.75	375 x 83 x 70	22.5 mm	6	14	15.25 x 2.38	387 x 60	15.75 x 3.47	400 x 88	2.31	59	3.00	76	1.73	44	1.86	47
E6PB	9.50 x 6.25 x 3.00	241 x 159 x 76	30.5 mm	6	14	10.00 x 5.38	254 x 137	10.50 x 6.47	267 x 164	2.56	65	6.00	152	2.11	54	2.61	66
E6PBG	9.50 x 6.25 x 3.00	241 x 159 x 76	22.5 mm	6	14	10.00 x 5.38	254 x 137	10.50 x 6.47	267 x 164	2.56	65	6.00	152	2.11	54	2.61	66
E8PB	20.25 x 3.25 x 2.75	514 x 83 x 70	30.5 mm	8	14	20.75 x 2.38	527 x 60	21.25 x 3.47	540 x 88	2.31	59	3.00	76	1.73	44	1.86	47
E8PBG	20.25 x 3.25 x 2.75	514 x 83 x 70	22.5 mm	8	14	20.75 x 2.38	527 x 60	21.25 x 3.47	540 x 88	2.31	59	3.00	76	1.73	44	1.86	47
E9PB	9.50 x 8.50 x 3.00	241 x 216 x 76	30.5 mm	9	14	10.00 x 7.62	254 x 194	10.50 x 8.72	267 x 221	2.56	65	8.25	210	2.11	54	2.61	66
E9PBG	9.50 x 8.50 x 3.00	241 x 216 x 76	22.5 mm	9	14	10.00 x 7.62	254 x 194	10.50 x 8.72	267 x 221	2.56	65	8.25	210	2.11	54	2.61	66
E10PB	24.75 x 3.25 x 2.75	629 x 83 x 70	30.5 mm	10	14	25.25 x 2.38	641 x 60	25.75 x 3.47	654 x 88	2.31	59	3.00	76	1.73	44	1.86	47
E10PBG	24.75 x 3.25 x 2.75	629 x 83 x 70	22.5 mm	10	14	25.25 x 2.38	641 x 60	25.75 x 3.47	654 x 88	2.31	59	3.00	76	1.73	44	1.86	47
E12PB	11.75 x 8.50 x 3.00	298 x 216 x 76	30.5 mm	12	14	12.25 x 7.62	311 x 194	12.75 x 8.72	324 x 221	2.56	65	8.25	210	2.11	54	2.61	66
E12PBG	11.75 x 8.50 x 3.00	298 x 216 x 76	22.5 mm	12	14	12.25 x 7.62	311 x 194	12.75 x 8.72	324 x 221	2.56	65	8.25	210	2.11	54	2.61	66
E16PB	11.75 x 10.75 x 3.00	298 x 273 x 76	30.5 mm	16	14	12.25 x 9.88	311 x 251	12.75 x 10.97	324 x 279	2.56	65	10.50	267	2.11	54	2.61	66
E16PBG	11.75 x 10.75 x 3.00	298 x 273 x 76	22.5 mm	16	14	12.25 x 9.88	311 x 251	12.75 x 10.97	324 x 279	2.56	65	10.50	267	2.11	54	2.61	66

Distributed By:  
 McLean Parts

www.hoffmanparts.com  
 mcleanpartsdirect@mcleanparts.net

5736 N. Michigan Rd  
 Indianapolis, IN 46228  
 317-257-6811



Distributed By:  
McLean Parts

www.hoffmanparts.com  
mcleanpartsdirect@mcleanparts.net

5736 N. Michigan Rd  
Indianapolis, IN 46228  
317-257-6811